

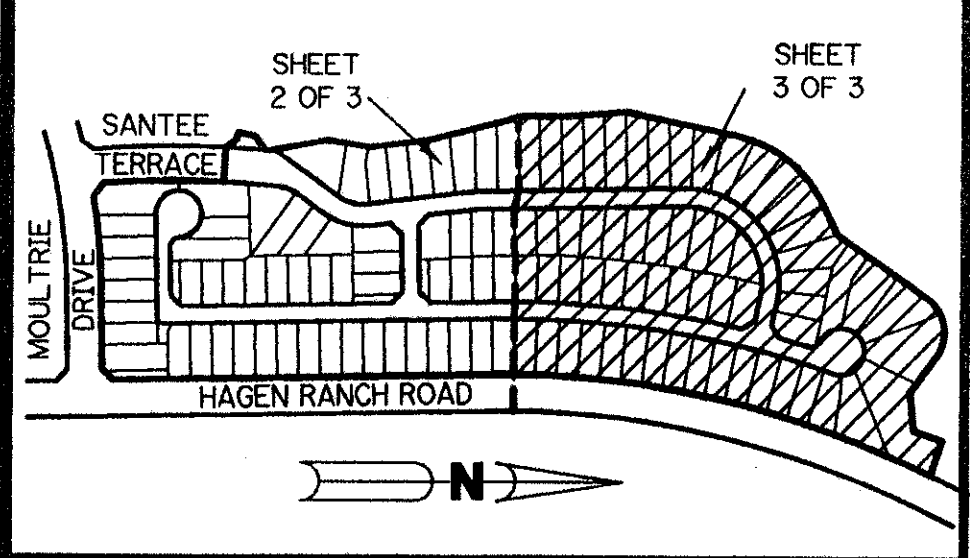
A PART OF LAKE CHARLESTON PLANNED UNIT DEVELOPMENT

LAKE CHARLESTON - TRACT "X"

BEING A REPLAT OF TRACT "X" AND A PORTION OF TRACT "W" AND SANTEE TERRACE, ALL ACCORDING TO THE PLAT OF LAKE CHARLESTON PLAT NO. 3 - P.U.D. AS RECORDED IN PLAT BOOK 62, PAGES 55 THROUGH 68, INCLUSIVE, OF THE PUBLIC RECORDS OF PALM BEACH COUNTY, FLORIDA. SECTION 9, TOWNSHIP 45 SOUTH, RANGE 42 EAST

SHEET 3 OF 3

JUNE, 1993



KEY MAP N.T.S.

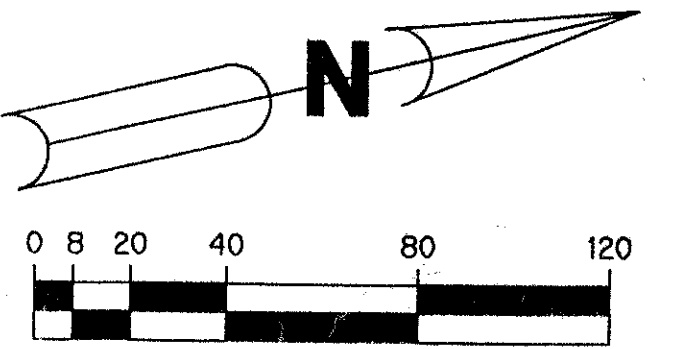
LAKE TRACT 5
LAKE CHARLESTON - PLAT NO. 3
P.B. 62, PGS. 55-68
(MAINTAINED BY LAKE CHARLESTON
MAINTENANCE ASSOCIATION INC.)

THIS INSTRUMENT PREPARED BY
PERRY C. WHITE P.L.S. 4213 STATE OF FLORIDA
LAWSON, NOBLE AND ASSOCIATES, INC.
ENGINEERS PLANNERS SURVEYORS
WEST PALM BEACH, FLORIDA

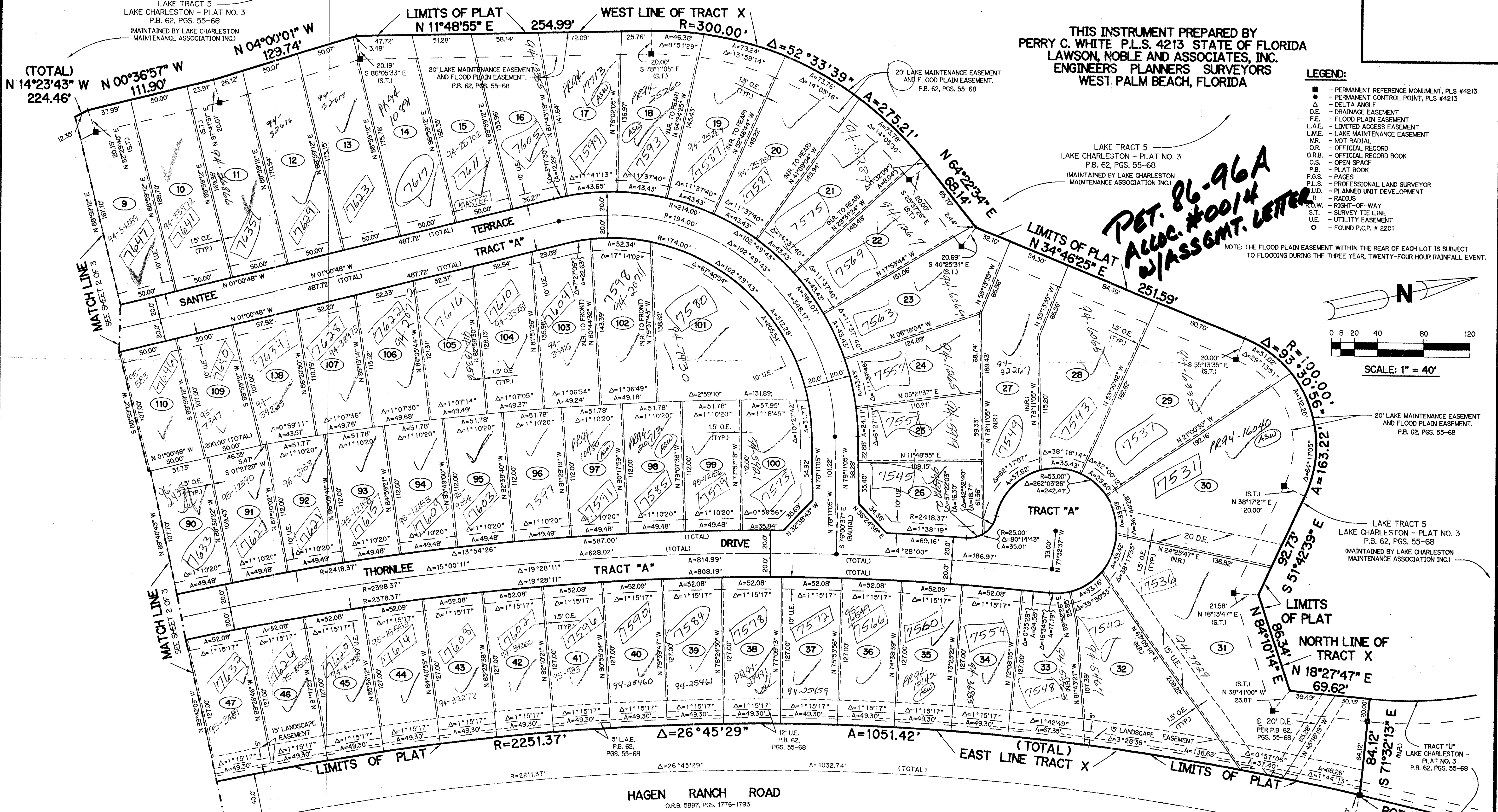
- LEGEND:**
- - PERMANENT REFERENCE MONUMENT, PLS #4213
 - - PERMANENT CONTROL POINT, PLS #4213
 - Δ - DELTA ANGLE
 - D.E. - DRAINAGE EASEMENT
 - F.E. - FLOOD PLAIN EASEMENT
 - L.A.E. - LIMITED ACCESS EASEMENT
 - L.M.E. - LAKE MAINTENANCE EASEMENT
 - NR. - NOT RADIAL
 - O.R. - OFFICIAL RECORD
 - O.R.B. - OFFICIAL RECORD BOOK
 - O.S. - OPEN SPACE
 - P.B. - PLAT BOOK
 - P.G.S. - PAGES
 - P.L.S. - PROFESSIONAL LAND SURVEYOR
 - P.U.D. - PLANNED UNIT DEVELOPMENT
 - R. - RADIUS
 - R.O.W. - RIGHT-OF-WAY
 - S.T. - SURVEY TIE LINE
 - U.E. - UTILITY EASEMENT
 - - FOUND P.C.P. # 2201

PET. 86-96A
ALOC. #0014
W/ASSGMT. LETTER

NOTE: THE FLOOD PLAIN EASEMENT WITHIN THE REAR OF EACH LOT IS SUBJECT TO FLOODING DURING THE THREE YEAR, TWENTY-FOUR HOUR RAINFALL EVENT.



SCALE: 1" = 40'



SUBDIVISION # TRACT X
BOOK 71 PAGE 135
FLOOD ZONE B
ZONING RTS
QUAD # 49
SE 86-96
PUD NAME LAKE CHARLESTON
TAZ 439

0533-02/

LAKE CHARLESTON-TRACT "X"